

the engine is off. You may unlock the door by remote controller when driving.

● **Good Adaptability:**

Applicable to most motor vehicles

● **multi-languages voice:**

Chinese, English, Russian, Arabic and Farsi.

● **Monitor function:**

You may listen in sound for car, and the phone can be used for usual phone.

● **Engine Cut-off:**

The engine will be cut off by mobile phone or telephone when the car is stolen.

● **GSM Position Service:**

The car position can be traced through the base station of the GSM network (The ISP Internet must support this function)

● **Automatic Defense:**

If you forget to lock up the car, the mainframe will lock it up automatically after 1 minute.

GSM Module (TC35i) Features

Feature	Implementation
Power Supply(typical)	Single supply voltage 3.3V-4.8V
Power Saving	Current power consumption while remaining in SLEEP mode: 3mA
Charging	TC35i Comprises an internal charging circuit
GSM Class	Small MS
Frequency Bands	Dual band EGSM 900 and GSM 1800 Compliant to GSM Phase 2/2+
Transmit Power	Class 4(2W) at EGSM 900 Class 1(1W) at GSM 1800
SMS	MT,MO,CB,Text and PDU mode, Concatenated SMS SMS storage: SIM card and in addition 25 SMS locations in the mobile Equipment
DATA	Transmission rates: 2.4 00, 4.800, 9.600, 14.400 bps, non-transparent, USSD
FAX	Group 3: Class1, Class 2
IM Interface	<ul style="list-style-type: none"> • Supported SIM Card: 3V • External SIM card reader has to be connected via interface connector (Note that card reader is not part of TC35i)
Antenna Interface	50Ω antenna connector
Audio Interface	Two analog audio interfaces (balanced microphone inputs and balanced outputs)
Speech Codec	Triple rate codec: <ul style="list-style-type: none"> • Half Rate (ETS 06.20) • Full Rate (ETS 06.10) • Enhanced full rate (ETS 06.50/06.60/06.80) • Enhanced hardsfree operation with echo cancellation and noise reduction

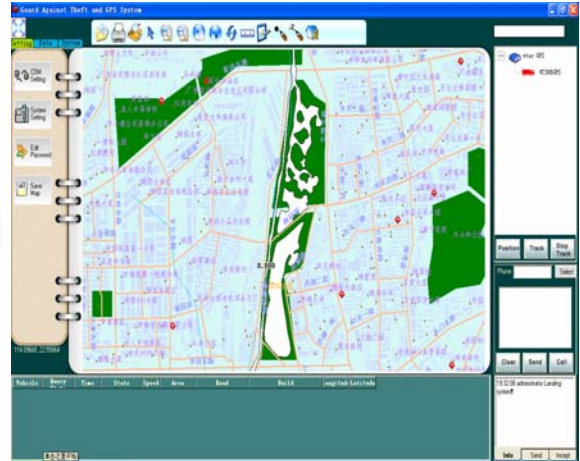
Serial Interface	<ul style="list-style-type: none"> • 2.6V Level bi-directional bus for commands/data using AT commands • Supports RTS/CTS hardware handshake and software XON/XOFF flow control • Multiplex ability according to GSM 07.10 multiplex protocol • Baud rates from 300bps to 230.400bps • Autobauding supports baud rates: 1.200, 4.800, 9.600, 19.200, 38.400,57.600,115.200 and 230.400 bps
Phonebook Management	Supported Phonebook types: SM,FD,LD,MC,RC,ON,ME
SIM Application Toolkit	Supports SAT class 3,GSM 11.14 Release 98,support of letter class "c"
Ringing Tones	Offers a choice of 7 different ringing tones/melodies, easily selectable with AT commands

GSM Car Alarm Features

Compatible Voltage	10~16V, Typical: 12VDC
Current of Static State	<70mA
Operating Current	<2A (Depending on the internet on which it works)
Transmit Frequency of Remote	433.92MHz
Transmit Power	≤5mW
Receiving Frequency of Remote	433.92MHz
Receiving sensitivity	Excel -95dBm
Coding Modulus of Remote	Changing code of frequency conversion
Operating Frequency of GSM	900/1800MHz.

Included accessories: 20pin Cable x1, Remote control x2, Manual x1, GSM Antenna x1, vibration sensor x1. Microphone and voice speaker with cable x1, relay x1, Alarm x1, SOS button with cable x1, dialer x1.

GSM/GPS CAR ALARM SYSTEM



VC-366GSM&GPS

● Omni-directional Anti-theft Alarm

Vibration alarm, Break-in alarm, Battery cut off alarm, Rear Panel board opened alarm and Emergency call alarm (24 hours force defense)

● Sending Alarm Message:

All alarms messages will be sent by text messages to the pre-set 4 mobile phone (most 19 units/per team)

● 2 Remote Alarm Modes:

Giving a text message alarm, giving a dial-up alarm.

● Remote setting(telephone or mobile phone):

You may dial-up the mainframe to set by mobile phone or phone.

● 2 Locale Alarm Modes:

Alarm working mode or mute working mode

● 2 Remote Control Modes(mobile phone or phone)

You may set the mainframe to a mute working defensible mode; alarm working defensible mode and indefensible mode. You may control the automobile in the seven seas, but these places must be GSM signal (if you lose the remote controller, you may enact taboo remote controller will be used by telephone)

● Shutdown Indication:

The speakers will “beep” for 3 sounds if the door is not shut down properly. (Otherwise it will raise the alarm after ten seconds)

● Parking Indication:

Both indicator lights will flash when the door is open.

● Automatic Lock/Unlock the Door:

The door will lock automatically when the car is driven and the brake is trodden slightly. And the door will unlock automatically when the engine is shut down. Also, you may unlock the door by remote controller when driving.

● Good Adaptability:

Add: 3/F East HuaJian Industry Building No.251 BaoGang North RD,ShenZhen China

Tel: +86 755 82408438/+852 83474775 Fax: +86 755 82404238/+852 81673268

[Http://www.china-vtec.com](http://www.china-vtec.com)

Email: info@china-vtec.com

Applicable to most motor vehicles

● **Monitoring:**

You may listen in and even communicate with the thief when the car is being stolen.(the phone can be used for usual phone)

● **Forced Shut-off:**

The engine can be shut off by mobile phone or telephone when the car is being stolen.

● **Automatic Defense:**

If you forget to lock up the car, the mainframe will lock it up automatically after 1 minute.

● **multi-languages voice:**

Chinese, English, Russian, Arabic and Farsi.r

● *****GPS Automatic Locating:**

You may know your car position, direction, speed and even draw a driving slot in the E-map of the computer by installing a terminal receiver.

● ******GPS Multi-position:**

You may monitor more than one car by using an at tempering software.

● ******Net work Alarm:**

Can link with local emergency center.

P.S. The functions mark with “ * ” are optional**

GSM Module (TC35i) Features

Feature	Implementation
Power Supply (typical)	Single supply voltage 3.3V-4.8V
Power Saving	Current power consumption while remaining in SLEEP mode: 3mA
Charging	TC35i Comprises an internal charging circuit
GSM Class	Small MS
Frequency Bands	Dual band EGSM 900 and GSM 1800 Compliant to GSM Phase 2/2+
Transmit Power	Class 4(2W) at EGSM 900 Class 1(1W) at GSM 1800
SMS	MT, MO, CB, Text and PDU mode, Concatenated SMS SMS storage: SIM card and in addition 25 SMS locations in the mobile Equipment
DATA	Transmission rates: 2.4 00, 4.800, 9.600, 14.400 bps, non-transparent, USSD
FAX	Group 3: Class1, Class 2
IM Interface	<ul style="list-style-type: none"> Supported SIM Card: 3V External SIM card reader has to be connected via interface connector (note that card reader is not part of TC35i)
Antenna Interface	50Ω antenna connector
Audio Interface	Two analog audio interfaces(balanced microphone inputs and balanced

	outputs)
Speech Codec	Triple rate codec: <ul style="list-style-type: none"> • Half Rate (ETS 06.20) • Full Rate (ETS 06.10) • Enhanced full rate (ETS 06.50/06.60/06.80) • Enhanced handsfree operation with echo cancellation and noise reduction
Serial Interface	<ul style="list-style-type: none"> • 2.6V Level bi-directional bus for commands/data using AT commands • Supports RTS/CTS hardware handshake and software XON/XOFF flow control • Multiplex ability according to GSM 07.10 multiplex protocol • Baud rates from 300bps to 230.400bps • Autobauding supports baud rates: 1.200, 4.800, 9.600, 19.200, 38.400, 57.600, 115.200 and 230.400 bps
Phonebook Management	Supported Phonebook types: SM, FD, LD, MC, RC, ON, ME
SIM Application Toolkit	Supports SAT class 3, GSM 11.14 Release 98, support of letter class "c"
Ringing Tones	Offers a choice of 7 different ringing tones/melodies, easily selectable with AT commands

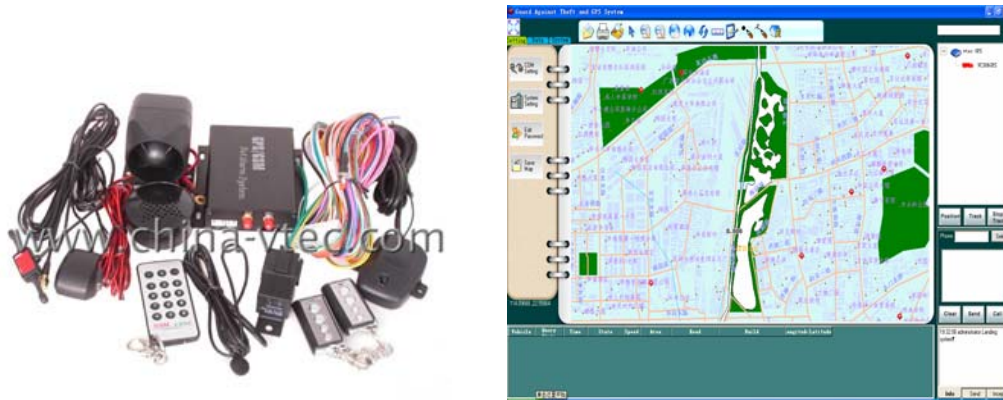
GPS Tracking Device Features

Network	GSM
Operating Frequency of GSM	900/1800Mhz
GPS chip	SiRF Star III high performance GPS chipset
GPS sensitivity	-159dBm
GPS accuracy	10m
Channel	20 channel satellites
Time To First Fix	Reacquisition 0.1s Cold status 45s Warm status 35s Hot status 1s
Power Supply	DC 10—16V input
Operating Current	<2.5A (Depending on the internet on which it works)
Current of Static State	<70mA
Battery	Built-in 3.7V 700mAh Ni-Mh battery
size	114(L)x105(W)x29(H) mm
Transmit Frequency of Remote	433.92MHz
Receiving Frequency of Remote	433.92MHz
Transmit Power	≤5mW
Receiving sensitivity	Excel -95dBm

Weight	1.5kg
Material	aluminium
Operation Temp.	-25°C to +60°C
Humidity	5%--95% non-condensing

Included accessories: 20pin Cable x1, Remote control x2, Manual x1, GSM Antenna x1, vibration sensor x1. Microphone and voice speaker with cable x1, relay x1, CD X1, Alarm x1, SOS button with cable x1, GPS Antenna x1, dialer x1.

GSM/GPS CAR ALARM SYSTEM



VC-390GGT (without dialer)

● **Omni-directional Anti-theft Alarm**

Vibration alarm, Break-in alarm, Battery cut off alarm, Rear Panel board opened alarm and Emergency call alarm (24 hours force defense)

● **Sending Alarm Message:**

All alarms messages will be sent by text messages to the pre-set 4 mobile phone (most 19 units/per team)

● **2 Remote Alarm Modes:**

Giving a text message alarm and a dial-up alarm.

● **Remote setting (telephone or mobile phone):**

You may dial-up the mainframe to set by mobile phone or phone.

● **2 Locale Alarm Modes:**

Alarms can be activated or de-activated (depends the car user)

● **2 Remote Control Modes(mobile phone or phone)**

You may set the mainframe to a mute working defensible mode; alarm working defensible mode and indefensible mode. You may control the automobile in the seven seas, but these places must be GSM signal (if you lose the remote controller, you may enact taboo remote controller will be used by telephone)

● **Shutdown Indication:**

The speakers will "beep" for 3 sounds if the door is not shut down properly. (Otherwise it will raise the alarm after ten seconds)

● **Parking Indication:**

Both indicator lights will flash when the door is open.

● **Automatic Lock/Unlock the Door:**

The door will lock automatically when the car is driven and the brake is trodden slightly. And the door will unlock automatically when the engine is shut down. Also, you may unlock the door by remote controller when driving.

● **Good Adaptability:**

Applicable to most motor vehicles

● **Monitoring:**

Add: 3/F East HuaJian Industry Building No.251 BaoGang North RD,ShenZhen China

Tel: +86 755 82408438/+852 83474775 Fax: +86 755 82404238/+852 81673268

[Http://www.china-vtec.com](http://www.china-vtec.com)

Email: info@china-vtec.com

You may listen in and even communicate with the thief when the car is being stolen.(the phone can be used for usual phone)

● **Forced Cut-off:**

The engine can be cut off by using mobile phone or telephone when the car is being stolen.

● **Automatic Defense:**

If you forget to lock up the car, the mainframe will lock it up automatically after 1 minute.

● **GEO Fencing Function:**

Over boundary inside/outside control (supported by software & Country digital map)

● **multi-languages voice :**

Chinese, English, Russian, Arabic and Farsi.

● *****GPS Automatic Locating:**

You may track your car position, direction, speed and even draw a driving slot in the E-map of the computer by installing a terminal I receiver. You can also check back the history data for the particular car. Besides, you may also monitor more than one car by using the software.

● ******Net work Alarm:**

Can link with local emergency center.

P.S. The functions mark with “ * ” are optional**

GSM Module (TC35i) Features

Feature	Implementation
Power Supply (typical)	Single supply voltage 3.3V-4.8V
Power Saving	Current power consumption while remaining in SLEEP mode: 3mA
Charging	TC35i Comprises an internal charging circuit
GSM Class	Small MS
Frequency Bands	Dual band EGSM 900 and GSM 1800 Compliant to GSM Phase 2/2+
Transmit Power	Class 4(2W) at EGSM 900 Class 1(1W) at GSM 1800
SMS	MT, MO, CB, Text and PDU mode, Concatenated SMS SMS storage: SIM card and in addition 25 SMS locations in the mobile Equipment
DATA	Transmission rates: 2.4 00, 4.800, 9.600, 14.400 bps, non-transparent, USSD
FAX	Group 3: Class1, Class 2
IM Interface	<ul style="list-style-type: none"> Supported SIM Card: 3V External SIM card reader has to be connected via interface connector (note that card reader is not part of TC35i)
Antenna Interface	50 Ω antenna connector
Audio Interface	Two analog audio interfaces(balanced microphone inputs and balanced outputs)

Speech Codec	Triple rate codec: <ul style="list-style-type: none"> • Half Rate (ETS 06.20) • Full Rate (ETS 06.10) • Enhanced full rate (ETS 06.50/06.60/06.80) • Enhanced hands-free operation with echo cancellation and noise reduction
Serial Interface	<ul style="list-style-type: none"> • 2.6V Level bi-directional bus for commands/data using AT commands • Supports RTS/CTS hardware handshake and software XON/XOFF flow control • Multiplex ability according to GSM 07.10 multiplex protocol • Baud rates from 300bps to 230.400bps • Auto-bauding supports baud rates: 1.200, 4.800, 9.600, 19.200, 38.400, 57.600, 115.200 and 230.400 bps
Phonebook Management	Supported Phonebook types: SM, FD, LD, MC, RC, ON, ME
SIM Application Toolkit	Supports SAT class 3, GSM 11.14 Release 98, support of letter class "c"
Ringing Tones	Offers a choice of 7 different ringing tones/melodies, easily selectable with AT commands

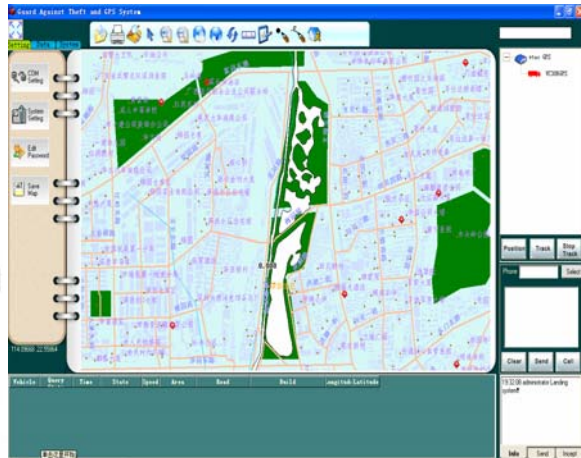
GPS Tracking Device Features

Network	GSM
Operating Frequency of GSM	900/1800Mhz
GPS chip	SiRF Star III high performance GPS chipset
GPS sensitivity	-159dBm
GPS accuracy	10m
Channel	20 channel satellites
Time To First Fix	Reacquisition 0.1s Cold status 45s Warm status 35s Hot status 1s
Power Supply	DC 10—16V input
Operating Current	<2.5A (Depending on the internet on which it works)
Current of Static State	<70mA
Battery	Built-in 3.7V 700mAh Ni-Mh battery
size	114(L)x105(W)x29(H) mm
Transmit Frequency of Remote	433.92MHz
Receiving Frequency of Remote	433.92MHz
Transmit Power	≤5mW

Receiving sensitivity	Excel -95dBm
Weight	1.5kg
Material	aluminium
Operation Temp.	-25°C to +60°C
Humidity	5%--95% non-condensing

Included accessories: 20pin Cable x1, Remote control x2, Manual x1, GSM Antenna x1, vibration sensor x1. Microphone and voice speaker with cable x1, relay x1, CD X1, Alarm x1, SOS button with cable x1, GPS Antenna x1

GSM/GPS CAR ALARM SYSTEM



VC-398GGTBA (Bluetooth & Audio Control Functions)

● Omni-directional Anti-theft Alarm

Vibration alarm, Break-in alarm, Battery cut off alarm, Rear Panel board opened alarm and Emergency call alarm (24 hours force defense)

● Sending Alarm Message:

All alarms messages will be sent by text messages to the pre-set 4 mobile phone (most 19 units/per team)

● 2 Remote Alarm Modes:

Giving a text message alarm, giving a dial-up alarm.

● Remote setting (telephone or mobile phone):

You may dial-up the mainframe to set by mobile phone or phone.

● 2 Locale Alarm Modes:

Alarms can be activated or de-activated (depends the car user)

● 2 Remote Control Modes(mobile phone or phone)

You may set the mainframe to a mute working defensible mode; alarm working defensible mode and indefensible mode. You may control the automobile in the seven seas, but these places must be GSM signal (if you lose the remote controller, you may enact taboo remote controller will be used by telephone)

● Shutdown Indication:

The speakers will "beep" for 3 sounds if the door is not shut down properly. (Otherwise it will raise the alarm after ten seconds)

● Parking Indication:

Both indicator lights will flash when the door is open.

● Automatic Lock/Unlock the Door:

The door will lock automatically when the car is driven and the brake is trodden slightly. And the door will unlock automatically when the engine is shut down. Also, you may unlock the door by remote controller when driving.

● Good Adaptability:

Add: 3/F East HuaJian Industry Building No.251 BaoGang North RD,ShenZhen China

Tel: +86 755 82408438/+852 83474775 Fax: +86 755 82404238/+852 81673268

[Http://www.china-vtec.com](http://www.china-vtec.com)

Email: info@china-vtec.com

Applicable to most motor vehicles

● **Monitoring:**

You may listen in and even communicate with the thief when the car is being stolen.(the phone can be used for usual phone)

● **Forced Cut-off:**

The engine can be cut off by using mobile phone or telephone when the car is being stolen.

● **Automatic Defense:**

If you forget to lock up the car, the mainframe will lock it up automatically after 1 minute.

● **GEO Fencing Function:**

Over boundary inside/outside control (supported by software & Country digital map)

● **Multi-languages (depends the user communicate language) :**

Chinese, English, Russian, Arabic and Farsi.

● **car audio control Function:**

When somebody called in, all of the car audio will automatically shut-off. When finished the called, the car audio will automatically re-open again.

● **GPS (self-help Navigation):**

If your PDA/PPC phone having the Bluetooth function, and installed the country digital map, then you can travel around with this function. (you can find the destination with the digital map)

● *****GPS Automatic Locating :**

You may track your car position, direction, speed and even draw a driving slot in the E-map of the computer by installing a terminal I receiver. You can also check back the history data for the particular car. Besides, you may also monitor more than one car by using the software.

● ******Net work Alarm:**

Can link with local emergency center.

P.S. The functions mark with “ * ” are optional**

GSM Module (TC35i) Features

Feature	Implementation
Power Supply (typical)	Single supply voltage 3.3V-4.8V
Power Saving	Current power consumption while remaining in SLEEP mode: 3mA
Charging	TC35i Comprises an internal charging circuit
GSM Class	Small MS
Frequency Bands	Dual band EGSM 900 and GSM 1800 Compliant to GSM Phase 2/2+
Transmit Power	Class 4(2W) at EGSM 900 Class 1(1W) at GSM 1800
SMS	MT, MO, CB, Text and PDU mode, Concatenated SMS SMS storage: SIM card and in addition 25 SMS locations in the mobile Equipment
DATA	Transmission rates: 2.4 00, 4.800, 9.600, 14.400 bps, non-transparent,

	USSD
FAX	Group 3: Class1, Class 2
IM Interface	<ul style="list-style-type: none"> • Supported SIM Card: 3V • External SIM card reader has to be connected via interface connector (note that card reader is not part of TC35i)
Antenna Interface	50 Ω antenna connector
Audio Interface	Two analog audio interfaces(balanced microphone inputs and balanced outputs)
Speech Codec	Triple rate codec: <ul style="list-style-type: none"> • Half Rate (ETS 06.20) • Full Rate (ETS 06.10) • Enhanced full rate (ETS 06.50/06.60/06.80) • Enhanced hands-free operation with echo cancellation and noise reduction
Serial Interface	<ul style="list-style-type: none"> • 2.6V Level bi-directional bus for commands/data using AT commands • Supports RTS/CTS hardware handshake and software XON/XOFF flow control • Multiplex ability according to GSM 07.10 multiplex protocol • Baud rates from 300bps to 230.400bps • Auto-bauding supports baud rates: 1.200, 4.800, 9.600, 19.200, 38.400,57.600,115.200 and 230.400 bps
Phonebook Management	Supported Phonebook types: SM, FD, LD, MC, RC, ON, ME
SIM Application Toolkit	Supports SAT class 3,GSM 11.14 Release 98,support of letter class "c"
Ringing Tones	Offers a choice of 7 different ringing tones/melodies, easily selectable with AT commands

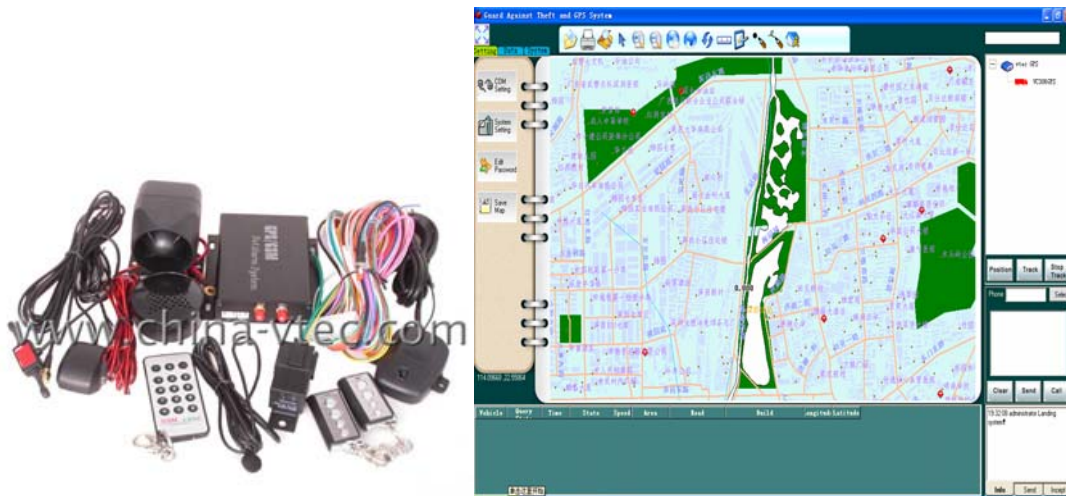
GPS Tracking Device Features

Network	GSM
Operating Frequency of GSM	900/1800Mhz
GPS chip	SiRF Star III high performance GPS chipset
GPS sensitivity	-159dBm
GPS accuracy	10m
Channel	20 channel satellites
Time To First Fix	Reacquisition 0.1s Cold status 45s Warm status 35s Hot status 1s
Power Supply	DC 10—16V input
Operating Current	<2.5A (Depending on the internet on which it works)

Current of Static State	<70mA
Battery	Built-in 3.7V 700mAh Ni-Mh battery
size	114(L)x105(W)x29(H) mm
Transmit Frequency of Remote	433.92MHz
Receiving Frequency of Remote	433.92MHz
Transmit Power	≤5mW
Receiving sensitivity	Excel -95dBm
Weight	1.5kg
Material	aluminium
Operation Temp.	-25°C to +60°C
Humidity	5%--95% non-condensing

Included accessories: 20pin Cable x1, Remote control x2, Manual x1, GSM Antenna x1, vibration sensor x1. Microphone and voice speaker with cable x1, relay x1, CD X1, Alarm x1, SOS button with cable x1, GPS Antenna x1

GSM/GPS CAR ALARM SYSTEM



VC-398GGTB (Bluetooth Function)

● Omni-directional Anti-theft Alarm

Vibration alarm, Break-in alarm, Battery cut off alarm, Rear Panel board opened alarm and Emergency call alarm (24 hours force defense)

● Sending Alarm Message:

All alarms messages will be sent by text messages to the pre-set 4 mobile phone (most 19 units/per team)

● 2 Remote Alarm Modes:

Giving a text message alarm, giving a dial-up alarm.

● Remote setting (telephone or mobile phone):

You may dial-up the mainframe to set by mobile phone or phone.

● 2 Locale Alarm Modes:

Alarms can be activated or de-activated (depends the car user)

● 2 Remote Control Modes(mobile phone or phone)

You may set the mainframe to a mute working defensible mode; alarm working defensible mode and indefensible mode. You may control the automobile in the seven seas, but these places must be GSM signal (if you lose the remote controller, you may enact taboo remote controller will be used by telephone)

● Shutdown Indication:

The speakers will "beep" for 3 sounds if the door is not shut down properly. (Otherwise it will raise the alarm after ten seconds)

● Parking Indication:

Both indicator lights will flash when the door is open.

● Automatic Lock/Unlock the Door:

The door will automatically lock when car is drive and the brake is trodden slightly. Door will automatically unlock when the engine is cut off. You may unlock the door by remote controller when driving.

● Good Adaptability:

Add: 3/F East HuaJian Industry Building No.251 BaoGang North RD,ShenZhen China

Tel: +86 755 82408438/+852 83474775 Fax: +86 755 82404238/+852 81673268

[Http://www.china-vtec.com](http://www.china-vtec.com)

Email: info@china-vtec.com

Applicable to most motor vehicles

● **Monitoring:**

You may listen in and even communicate with the thief when the car is being stolen.(the phone can be used for usual phone)

● **Forced Cut-off:**

The engine can be cut off by using mobile phone or telephone when the car is being stolen.

● **Automatic Defense:**

If you forget to lock up the car, the mainframe will lock it up automatically after 1 minute.

● **GEO Fencing Function:**

Over boundary inside/outside control (supported by software & Country digital map)

● **Multi-languages (depends the user communicate language) :**

Chinese, English, Russian, Arabic and Farsi..

● **GPS (self-help Navigation):**

If your PDA/PPC phone having the Bluetooth function, and installed the country digital map, then you can travel around with this function. (you can find the destination with the digital map)

● *****GPS Automatic Locating: , t**

You may track your car position, direction, speed and even draw a driving slot in the E-map of the computer by installing a terminal I receiver. You can also check back the history data for the particular car. Besides, you may also monitor more than one car by using the software.

● ******Net work Alarm:**

Can link with local emergency center.

P.S. The functions mark with “ **” are optional**

GSM Module (TC35i) Features

Feature	Implementation
Power Supply (typical)	Single supply voltage 3.3V-4.8V
Power Saving	Current power consumption while remaining in SLEEP mode: 3mA
Charging	TC35i Comprises an internal charging circuit
GSM Class	Small MS
Frequency Bands	Dual band EGSM 900 and GSM 1800 Compliant to GSM Phase 2/2+
Transmit Power	Class 4(2W) at EGSM 900 Class 1(1W) at GSM 1800
SMS	MT, MO, CB, Text and PDU mode, Concatenated SMS SMS storage: SIM card and in addition 25 SMS locations in the mobile Equipment
DATA	Transmission rates: 2.4 00, 4.800, 9.600, 14.400 bps, non-transparent, USSD
FAX	Group 3: Class1, Class 2
	• Supported SIM Card: 3V

IM Interface	<ul style="list-style-type: none"> External SIM card reader has to be connected via interface connector (note that card reader is not part of TC35i)
Antenna Interface	50 Ω antenna connector
Audio Interface	Two analog audio interfaces(balanced microphone inputs and balanced outputs)
Speech Codec	Triple rate codec: <ul style="list-style-type: none"> Half Rate (ETS 06.20) Full Rate (ETS 06.10) Enhanced full rate (ETS 06.50/06.60/06.80) Enhanced hands-free operation with echo cancellation and noise reduction
Serial Interface	<ul style="list-style-type: none"> 2.6V Level bi-directional bus for commands/data using AT commands Supports RTS/CTS hardware handshake and software XON/XOFF flow control Multiplex ability according to GSM 07.10 multiplex protocol Baud rates from 300bps to 230.400bps Auto-bauding supports baud rates: 1.200, 4.800, 9.600, 19.200, 38.400,57.600,115.200 and 230.400 bps
Phonebook Management	Supported Phonebook types: SM, FD, LD, MC, RC, ON, ME
SIM Application Toolkit	Supports SAT class 3,GSM 11.14 Release 98,support of letter class "c"
Ringing Tones	Offers a choice of 7 different ringing tones/melodies, easily selectable with AT commands

GPS Tracking Device Features

Network	GSM
Operating Frequency of GSM	900/1800Mhz
GPS chip	SiRF Star III high performance GPS chipset
GPS sensitivity	-159dBm
GPS accuracy	10m
Channel	20 channel satellites
Time To First Fix	Reacquisition 0.1s Cold status 45s Warm status 35s Hot status 1s
Power Supply	DC 10—16V input
Operating Current	<2.5A (Depending on the internet on which it works)
Current of Static State	<70mA
Battery	Built-in 3.7V 700mAh Ni-Mh battery

size	114(L)x105(W)x29(H) mm
Transmit Frequency of Remote	433.92MHz
Receiving Frequency of Remote	433.92MHz
Transmit Power	≤5mW
Receiving sensitivity	Excel -95dBm
Weight	1.5kg
Material	aluminium
Operation Temp.	-25°C to +60°C
Humidity	5%--95% non-condensing

Included accessories: 20pin Cable x1, Remote control x2, Manual x1, GSM Antenna x1, vibration sensor x1. Microphone and voice speaker with cable x1, relay x1, CD X1, Alarm x1, SOS button with cable x1, GPS Antenna x1

GSM/GPS CAR ALARM SYSTEM



VC-368GGT with GPRS function (suits for buses and trucks, 10-30V)

● Good Adaptability:

Applicable to most motor vehicles

● Forced Cut-off:

The engine can be cut off by using mobile phone or telephone when the car is being stolen.

● GEO Fencing Function:

Over boundary inside/outside control, can be set up 20 areas (supported by software & Country digital map)

● GPS Automatic Locating:

You may track your car position, direction, speed and even draw a driving slot in the E-map of the computer by installing a terminal I receiver. You can also check back the history data for the particular car. Besides, you may also monitor more than one car by using the software.

● Net work Alarm:

Can link with local emergency center.

● Information & Data:

The device will automatically save 500 car positions (longitude and latitude & working status messages without the network signal). all datas can be user-defined (including position, lock/unlock door, open/close the door, start/shut off the engine ...etc)

GSM MODULE (SIMCOM SIM300C) FEATURE:

Feature	Implementation
Frequency Bands	<ul style="list-style-type: none"> •Tri-Band GSM/GPRS 900/1800/1900MHz •Or Quad-Band * 850/900/1800/1900MHz
Transmit Power	<ul style="list-style-type: none"> •GPRS multi-slot class 10 •GPRS mobile station class B •Compliant to GSM phase 2/2+

	<ul style="list-style-type: none"> -Class 4 (2W @ 850/900MHz) - Class 1 (1W @ 1800/1900MHz)
Dimensions	50*33*6.2mm
Weight:	12 g
	<ul style="list-style-type: none"> •Control via AT commands (GSM 07.07,07.05 and SIMCOM enhanced AT Commands) •SIM application toolkit •Supply voltage range 3.4...4.5V
Power supply	<ul style="list-style-type: none"> •Low power consumption •Normal operation temperature: -20 ° C to +55 ° C •Restricted operation temperature: -30 ° C to -25 ° C and +55 ° C to +80 ° C •Storage temperature -40 ° C to +80 ° C
Fax	Group 3,class 1
DATA	<ul style="list-style-type: none"> •GPRS class 10:max.85.6 kbps(downlink) •PBCCH support •Coding schemes CS 1,2,3,4 •CSD up to 14.4 kbps •USSD •Non transparent mode •PPP-stack
SMS	Specifications for SMS via GSM/GPRS <ul style="list-style-type: none"> •Point-to point MO and MT •SMS cell broadcast •Text and PDU mode
Voice	<ul style="list-style-type: none"> •Tricodec <ul style="list-style-type: none"> ----Half rate(HR) ----Full rate(FR) ----Enhanced Full rate(EFR) •Hands-free operation • (Echo cancellation)
Drivers	<ul style="list-style-type: none"> •Microsoft Windows Mobile.RIL Driver •MUX Driver

Interfaces	<ul style="list-style-type: none"> •Interface to external SIM 3V 1.8V •60 Pins Board-to-board connector •Two analog audio interfaces •Keypad interface •LCD interface •RTC backup •AT commands via serial interface •Dual-serial interfaces •Antenna connector and antenna pad •Charge interface •Compatibility •AT cellular command interface
Approvals	<ul style="list-style-type: none"> •FTA •Local Type Approval •CE

GPS Tracking Device Features

Network	GSM/GPRS
Operating Frequency of GSM	850/900/1800/1900Mhz
GPS chip	SiRF Star III high performance GPS chipset
GPS sensitivity	-159dBm
GPS accuracy	10m
Gps Channel	20 channel satellites
Time To First Fix	Reacquisition 0.1s Cold status 45s Warm status 35s Hot status 1s
Power Supply	DC 10—30V input
Operating Current	<2.5A (Depending on the internet on which it works)
Current of Static State	<70mA
Battery	Built-in 3.7V 700mAh Ni-Mh battery
size	82(L)x64(W)x38(H) mm
Weight	1.2kg
material	aluminium
Operation Temp.	-25°C to +60°C
Humidity	5%--95% non-condensing

Included accessories: 12pin Cable x1, Manual x1, GSM Antenna x1, Microphone with cable x1, CD X1, SOS button with cable x1, GPS Antenna x1, relay x1

GPS Children Tacker



VC-102GPS

Detailed information

Based on GSM/GPRS (850/900/1800/1900MHz) network and GPS satellite positioning system to track the far-way object conveniently by short message, internet or PDA.

Advantages

- Easy to find the position: No need to build special platform, checking directly by short message, internet, PDA. So it can take down the cost for the server and the customers.
- It also supports other kinds of platform to track.
- Compact size: size 46*64*17mm (1.8*2.5*0.65inch), weight: 50g
- Antenna and battery are stored inside, easy to carry.

Standard Functions

- Work on real-time tracking: to track the position by the latitude, longitude in some digital maps.
- If the object enters the park underground or some other places with no signals, it will report to you the last position tracked.
- Auto-tracking: set up an interval and the times, it will report you the position information in that interval and the times.
- Adding/cancelling the authorized numbers
- SOS and monitoring functions
- GEO-fencing function. It will alert if the tracker goes out the set up area.

- E-lock: It will send SMS to the authorized numbers if it is dismantled. It will be on if the tracker stops.
- Over-speed limit: will send SMS to the authorized numbers if the object goes across the speed set up before.
- Low power alert

Application

- The tracking for vehicle-renting/outdoor machines
- The monitoring for kids, old persons, disabled people and pets
- The protection for the businessmen.
- Management for the outside staff
- Tracking for criminals

Specifications

Size	64mm x 46mm x 17mm(1.8"*2.5"*0.65")
Net Weight	50g
Network	GSM/GPRS
Band	850/900/1800/1900Mhz
GPS chip	SiRF Star III high performance GPS chipset
GPS sensitivity	-159dBm
GPS accuracy	5m
Time To First Fix	Reacquisition 0.1s Cold status 45s Warm status 35s Hot status 1s
Car charger	12—24V input 5V output
Wall charger	110—220V input 5V output
Battery	3.7V 800mAh Li-ion battery
Standby	48 hours
Storage Temperature	-40°C to +85°C
Operation Temperature	-20°C to +55°C
Humidity	5%--95% non-condensing

Included accessories: Manual x 1, Li-ion battery x 2, Recharge power supply x 1
(ALL Designs and specifications are subject to change without notice.)